



# keyassets

THE CHILDREN'S SERVICES PROVIDER



## 2018 IMPACT REPORT

**Key Assets Kentucky**  
961 Beasley Street, Suite 170,  
Lexington, KY 40509  
[www.keyassetskentucky.com](http://www.keyassetskentucky.com)  
859-226-5022

# LETTER FROM OUR EXECUTIVE DIRECTOR



I can't wait to share with you all of our amazing work and the difference we are making in the community! 2018 has been a year of stability and growth, meeting and overcoming challenges, and setting and achieving goals. The overarching theme across our organization is that we want to ADD to our community, help people BE A PART OF our community, and EDUCATE our community about the value of diversity and how it makes us better when we are all included.

Our Behavioral Health team of clinicians and case managers have made such an impact – from meeting with the youth in their local schools, working with families in their home, or conducting assessments to help the individual and family understand the issues and develop a plan for treatment and support. Being adaptable and flexible to meet people's needs is a hallmark of our services, just as important as providing quality and innovative services to our clients.

Our Children in Community Care (CCC) Program continues to grow and meet the needs of the youth in foster care who have complex needs such as Autism Spectrum Disorder and/or Intellectual Disabilities. We have designed a one-of-a-kind program that focuses on the youth involvement in their community, in addition to helping them work toward their goals of independence, improved functioning and being connected to their community.

In our continuing commitment to providing quality services, Key Assets Kentucky was proud to be awarded a 3-year accreditation by CARF, the Commission on Accreditation of Rehabilitation Facilities, in May 2018. We will continue to aspire to excellence in the Outpatient and Group Home Services we provide to children, youth, adults and families.

I welcome you to learn more about Key Assets services at [keyassetskentucky.com](http://keyassetskentucky.com), and you can keep up-to-date with what we're doing on Facebook as well, accessed at [www.facebook.com/keyassetskentucky](http://www.facebook.com/keyassetskentucky).

Sincerely,

A handwritten signature in cursive script that reads "Jennifer Hall".

Jennifer Hall, Executive Director

## IMPACT STATEMENT-TYLER'S STORY


Tyler\* came to **Key Assets Kentucky's** Children in Community Care (CCC) Program in late 2015, after "living" in foster care for many years – approximately 9 years -- in and out of psychiatric hospitals and institutions. Tyler had learned that it wasn't safe on the outside and that the only way to feel safe was inside of a locked facility. The CCC Program was designed for youth just like Tyler. Kentucky had many young people who had experienced institutionalization because there were no community options for youth with complex needs. Tyler does have very complex health and behavioral health needs, however the CCC Program is designed to bring these youth into the community, provide 1:1 therapeutic support and supervision at all times to keep them safe while allowing them to increase their independence, functioning and involvement in the community. The CCC Program's mission is to provide these youth with the experience of living and being a part of their community so that they are able to become an active part of it as they grow and develop into adulthood. In order to truly be a part of a community, you need connections to those who have potential to be lifelong connections. Tyler came to our program with no connections due to being in the foster care system for more than 10 years. This means that no one outside of the foster care system provided the important love and support all of us need. Tyler did not have anyone checking up on him or interested in his future. Although there were some community members interested from time to time, it did not last. Fast forward to late 2017, about two years after Tyler was placed in our program. Tyler had a new housemate named \*Joshua. Joshua was placed in our program so that he could receive the extra support and supervision that he needed. Joshua's parents were very involved and supportive – frequent calls and visits and participating in all treatment planning. Joshua's parents enjoyed getting to know Tyler and over time committed to be a part of Tyler's life and his future. Tyler and Joshua have been able to step down – together - to a Supported Community Living home for adults. Joshua's parents have committed to a lifelong connection to Tyler and that is truly serving our Purpose – to achieve positive and lasting outcomes for children, families and communities.

*\*Names have been changed for privacy purposes.*

### KAK Mission:

**Key Assets Kentucky** specializes in offering support services in two distinct areas: residential treatment group home care for youth and young adults with either autism spectrum disorder and/or developmental disabilities, and behavioral health counseling services for youth, adults and families in times of crisis. **Key Assets Kentucky** seeks to improve the lives of the clients they serve, and their families, by offering high levels of care and support in nurturing and hopeful environments.

# WHAT'S IN A NAME?



An **“asset”** is something of value. We take care of assets and we invest in them in order to have future benefit and impact.

Our name reflects our belief that children and young people are valuable and precious! They are the future and we must do everything we can to support them to grow up in safe and caring environments that help them to lead successful lives. We see children and young people as the **“key assets”** of this future.

We also recognize that for children and young people to do well in life that there are **“key developmental assets”** that need to be nurtured and invested in, such as education, emotional well-being, cultural identity, belonging and health. All require our time and investment. We want our young people to be resilient!

Our name **“key assets”** reflects the role that individuals and teams make in nurturing and caring for young people.

We would say that our staff, our carers and the families of children and young people are also **“key assets”** in supporting them to reach their full potential.





# KEY INTERNATIONAL STATISTICS

Key Assets Kentucky is part of a world-wide organization, Key Assets Group, founded to promote family-based solutions for vulnerable young people and their families across the world.

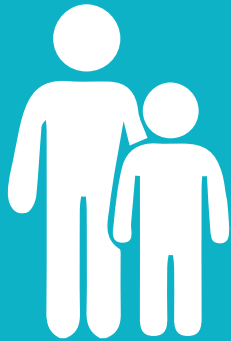


# 1400

employees & associates  
across 3 continents

# 1040

approved and  
valued foster and  
kinship carers



# 1131

children placed in  
out of home



# care



# 48

offices  
worldwide

# 814



families receiving  
**intensive**  
support

# 25000

children and young people  
receiving services  
**everyday**



# 79

Residential Care  
**or Individual**  
Living Arrangement  
Units Worldwide

# OUR PURPOSE



“ Our *purpose* is to achieve positive and lasting outcomes for children, families and communities. ”

## “ We are all Key Assets ”

It's a small world... but wherever you are there are vulnerable children and young people needing people like you!

Children and young people need to be safe, loved, healthy, and stable and have good standards of care if they're to have a chance at achieving adulthood successfully.

- > This is our purpose.
- > This is what we do.
- > We are Key Assets.

We have gained, together, a strong reputation everywhere we work. We are creative and responsive. We meet and exceed quality standards and deliver good outcomes for children, young people and their families.

Spanning nine countries around the world, we are a collective of dedicated people working alongside, and with, statutory and non-statutory agencies, families and communities. Through our services we share knowledge, expertise and experience.

---

“Our purpose is to achieve positive and lasting outcomes for children, families and communities”

We will achieve our purpose by positively impacting the lives of children, young people, their families and carers through quality services and expert advice designed to provide support, build confidence; improve skills, develop relationships and strengthen resilience.

---

Key to what we do is our culture and core values of:

- > Recognizing everybody counts and is accountable
- > Providing high quality and safe services
- > Achieving excellence through continuous improvement
- > Cultivating knowledge, innovation and learning

Our 'Purpose & Pledges' frame and drive the work we do; from supervising carers to supporting families; to our strategies for continued development and to social investment and service delivery.

We will ensure that 'people' remain at the heart of our work, understanding that it's the contribution, participation, ideas and determination of our collective team, that means all of us, which drives our work to achieve positive outcomes.

With this in mind and through supporting, listening and encouraging we will stay true to our pledges as outlined.

# OUR PLEDGES

## Our pledges to you



### CHILDREN & FAMILIES

1. Set high standards for ourselves and the care and support we provide for you
2. Be on your side and accept you for who you are and what you want to be
3. Prioritize your safety, connections and build your resilience
4. Be passionate, caring and respectful in everything that we do
5. Listen to and learn from you so that we can do things better

### CUSTOMERS, CARERS AND STAFF

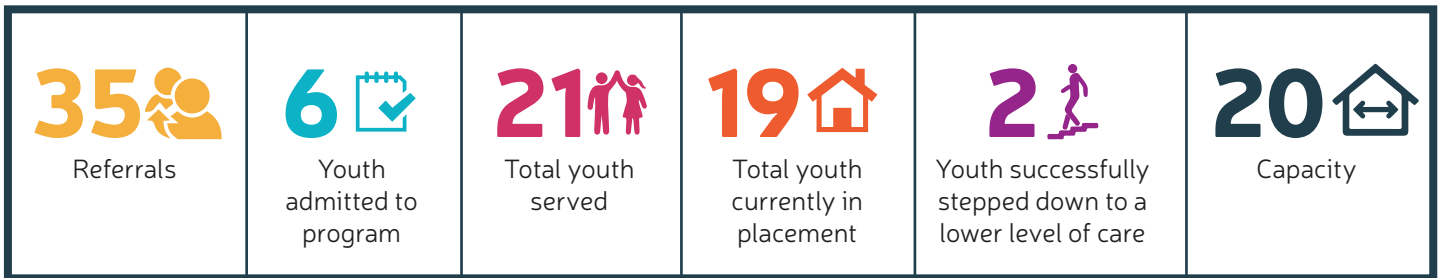
1. Deliver excellence through quality service provision, collaboration and measuring outcomes
2. Act with honesty and transparency
3. Deliver innovative services in cost effective ways
4. Challenge the norm, ask questions and keep our promises
5. Conduct our business with financial integrity to achieve sustainability and value

### COMMUNITIES

1. Build a socially responsible and friendly presence in each of our communities
2. Value diversity and inclusion and act with cultural sensitivity and respect
3. Be creative and flexible to respond to each community's unique needs
4. Recruit, train, support and retain the best people to deliver services
5. Contribute to shared learning through research and partnerships

# CHILDREN IN COMMUNITY CARE RESIDENTIAL GROUP HOME PROGRAM

## *By the Numbers*



## Highlights

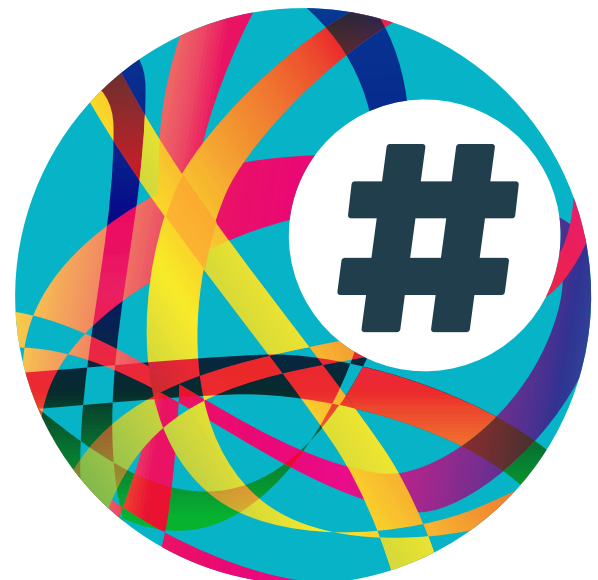
**Key Assets Kentucky** partnered with the Cabinet for Health and Family Services Department for Medicaid Services and Department for Community Based Services to create a Pilot Program in November of 2017. The focus of the Pilot Program is to examine the feasibility of decoupling services provided to youth and young adults who have mental health diagnoses such as Autism Spectrum Disorder (ASD) and Developmental and Intellectual Disabilities (DDID) and who are placed in out-of-home care.

The **Key Assets Kentucky Children in Community Care (CCC) Program** was selected as the pilot site due to the specialized services provided to individuals with severe and persistent challenges in social, emotional, behavioral, and/or psychiatric functioning. Clients served by **Key Assets Kentucky** meet medical necessity for community-based services for rehabilitation and habilitation and present with symptoms consistent with a DSM-V diagnosis of any of the following in combination:

- Autism Spectrum Disorder (ASD),
- Moderate to Severe Intellectual Disability,
- Receptive or Expressive Language Disorders,
- Medical diagnosis such as Seizure Disorder, Prader Willi Syndrome, or other conditions that require frequent medical professional oversight, or
- Behavioral or Psychiatric disorder of mood, affect, thought, or impulse control which interferes with his or her ability to adequately function in the domains of family, school, and community.

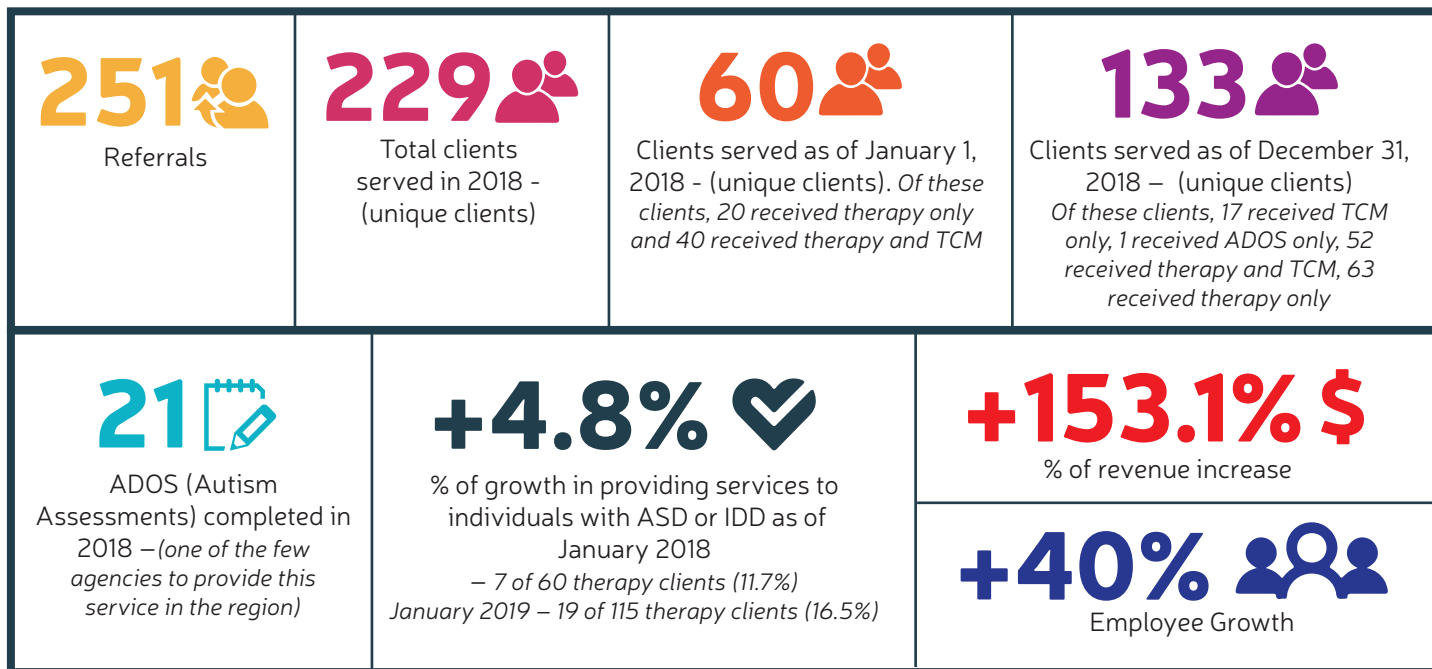
Twenty-one youth were served in the program, and there were no discharges from the program to a more restrictive environment; therefore, placement stability was 100%.

**Key Assets** is seen as a leader in providing quality residential services to a high-needs population in foster care as well as quality behavioral health services in the community.



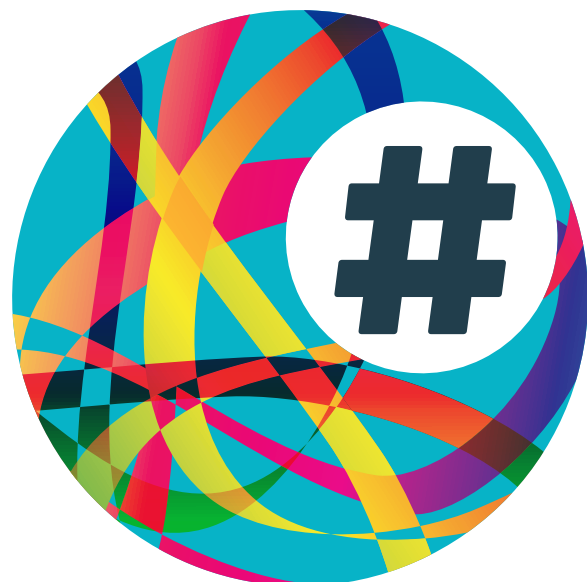
# KEY ASSETS BEHAVIORAL HEALTH

## By the Numbers



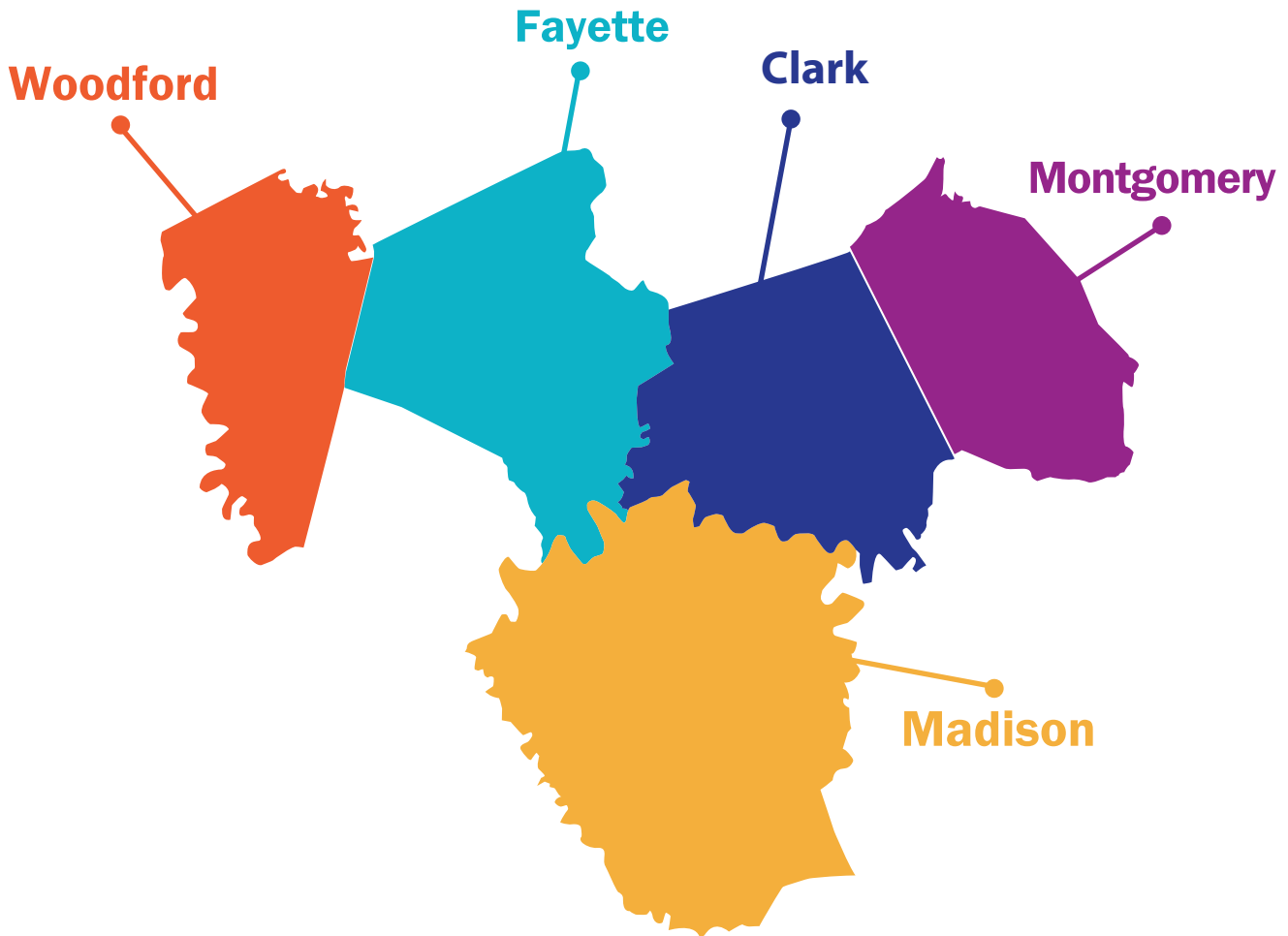
## Community Referral Sources & Partners

Abundant Living Psychological and Coaching Services, Shambra Mulder, PsyD  
Bluegrass.org  
Caregivers/Parents  
Clark County Pediatrics  
Department for Community-Based Services  
Health First Kentucky  
Judicial System  
KVC Kentucky  
Living Waters Counseling, Mary Beth Ludt, LPCA  
New Life Counseling Services, Jessica Herring, LCPA  
Our Lady of Peace Hospital  
Public & Private Schools  
Residential Treatment Facilities  
Juvenile Restorative Justice, Inc., Linda Harvey  
The Ridge Behavioral Health  
Heather Risk, PsyD and Associates  
Self-referral  
Sterling Health Solutions  
Wellcare MCO  
University of Kentucky Bluegrass Care Clinic  
University of Kentucky Center on Trauma and Children  
University of Kentucky Family Care Center





# WE ARE CURRENTLY SERVING STUDENTS IN THE FOLLOWING SCHOOLS:



## **Clark County**

Strode Station Elementary  
Phoenix Academy  
Robert D. Campbell Junior High School  
George Rogers Clark High School

## **Fayette: High School**

Bryan Station  
Frederick Douglass  
The Learning Center  
Martin Luther King Academy

## **Fayette: Middle School**

Crawford  
Leestown  
Tates Creek  
Winburn

## **Fayette: Elementary**

Arlington  
Athens Chilesburg  
Coventry Oaks  
Deep Springs  
Dixie  
Edythe J. Hayes  
Garrett Morgan  
James Lane Allen  
Julius Marks  
Lansdowne  
Mary Todd  
Meadowthorpe  
Northern  
Picadome  
Russell Cave  
Sandersville  
Squires  
Tates Creek

## **Woodford County:**

Huntertown Elementary  
Safe Harbor Academy  
Southside Elementary  
Woodford County High School  
Woodford County Middle School

## **Madison County:**

Model Laboratory School  
Richmond Middle School

## **Montgomery County:**

Camargo Elementary  
Mapleton Elementary  
Montgomery County Middle School  
Montgomery County High School

# KEY ASSETS CONTINUING EDUCATION



**Key Assets Kentucky** launched Continuing Education training to human service professionals – identifying unique topics not found in other local training sessions. Four trainings were held in 2018, reaching approximately 35 area professionals, agencies and community partners. Topics included:

- Providing Meaningful Services to Immigrant Families: Understanding Immigration Experiences and Trauma (6 CEUs) – May 2018
- Secondary Traumatic Stress and Stress Management – August 2018 (5 presentations)
- Social Work Ethics and Kentucky Law (3 CEUs) – September 2018
- LCSW Supervision According to Kentucky Law (3 CEUs) – September 2018



# OUR LEADERSHIP TEAM

**Jennifer Hall, MSW**  
Executive Director



**Phyllis Leigh, LCSW**  
Behavioral Health Director



**Tiffany Ratcliff Dail, M.ED.,  
MSW, LCSW**  
Clinical Director



**Carrie Price, MSW, CSW**  
CCC Director



**Lisa Robbins**  
Finance Director



**Jace Piersol**  
Human Resources Generalist



**Royce Gilpin, LPCC**  
Quality Assurance Manager



# WHAT TO EXPECT IN 2019



## GROW

- Increase capacity to serve individuals with Autism Spectrum Disorder and Intellectual and Developmental Disabilities
- Partner with the University of Louisville School of Social Work to support ongoing evaluation and program development with the Children in Community Care Program
- Increase recruitment and retention efforts to create an engaged and supported workforce

## LEAD

- Advocate for reform related to Autism services through the current Department for Community Based Services and Department for Medicaid Services Pilot
- Increase visibility in the community through a well-developed marketing plan

## INNOVATE

- Explore evidence based treatment modalities that best meet the needs of our service population
- Continue to provide CEU training offerings that meet the diverse needs of human services professionals in Central Kentucky
- Participate in local community events that demonstrate Key Assets' support for a particular cause



**Key Assets Kentucky**  
961 Beasley Street, Suite 170,  
Lexington, KY 40509  
[www.keyassetskentucky.com](http://www.keyassetskentucky.com)  
**859-226-5022**